

# VIOLA DA GAMBA SOCIETY PACIFICA

# GAMBA NEWS

Actually Vol 21, no. 2, October 2007  
VOLUME 21, NO. 1 SEPTEMBER 2007

## Notes From a Baroque Workshop

Ellen Farwell

The baroque ensemble that I play continuo viol with signed up for an all-day baroque workshop at Music Sources on September 15, so unfortunately I had to miss our first play day of the season, but really enjoyed myself at the workshop. It was sponsored by Bay Area Baroque Workshops, an affiliate of the San Francisco Early Music Society, with coaching by Michael Sand and Judy Linsenberg. We were one of four coached groups.

Participants were supposed to have prepared a couple of pieces to be coached on, but I had been on the East Coast all summer, and the rest of the group (Kathy Cochran on recorder, Jonathan Hall on baroque oboe and Mary Ellen Reed on harpsichord) had met only once or twice during that time to play. On top of that, Jonathan was sick and having breathing problems, so didn't know if he'd be able to play the oboe. The upshot was that we more or less winged it that Saturday on two pieces that we'd dusted off in our only rehearsal the night before, with Jonathan playing recorder rather than oboe and going home after the morning session. In spite of all, everything worked out quite well. Michael coached us on a Quantz trio sonata in the morning, and Judy coached us on a Telemann sonata in the afternoon, playing Jonathan's second recorder part herself.

What impressed me most was that both coaches heard *everything*. I sometimes tend to slog away on my bass part rather casually, thinking that nobody's really listening to *me*, and have in fact been more or less ignored in the past by coaches who were preoccupied with the soloists. But Michael and Judy both had strong ideas about what the viol (and harpsichord, too) should be doing, and I appreciated that.

One real surprise was in an andante movement of the Quantz, where Kathy and Jonathan were imitating each other on recorder in expressive legato melodies. I was trying to match their style, but Michael had me try it pizzicato! And it worked! He felt that the continuo can often successfully venture a contrasting style—something to think about.

The coordinator for the workshop, Art Ungar, says that BABW hopes to do another one in the spring. If anyone is interested, contact [info@babw.org](mailto:info@babw.org).

## Due Now: Dues

Please use the printable form on the last page, and remember that all checks should be made to VdGS-Pacifica.

~ Thank you ~

## October 27: Play Day

Amy Brodo will lead us this month; note the unusual date. Please contact John Mark ([mark\\_bach8@hotmail.com](mailto:mark_bach8@hotmail.com) or 510-531-1471) as soon as possible to let him know you will attend. Newcomers and rank beginners always welcome.

Zion Lutheran Church  
5201 Park Blvd., Oakland

Start Time 9:15 am

*Sheet music, coffee, and tea supplied*

### 2007-2008 Schedule

DATE	COACH
October 27	Amy Brodo
November 10	Joanna Blendulf
December 8	William Skeen
January 12	Julie Jeffrey
February 9	John Dornenburg at Stanford
March 8	Roy Whelden
April 12	Farley Pearce
May 10	Shira Kammen

## For Sale

**Ask Miss Fret-Knot: A guide to consort manners**, by Prudence Fret-Knot and Lyle York, is available for \$14.95 plus shipping from the Boulder Early Music Shop, PO Box 900, Ouray, CO, 81427. [www.bems.com](http://www.bems.com).

**Visit Your Local Viol Builder!** 7-string bass, Bertrand model, rich sound. 6-string bass, Jaye model, bright and delightful to play. Treble, Hoskins model. Tenors and other bass models also available. Soft and hard cases custom-fitted to your instrument. Repairs. Come by to try an instrument, take a shop tour and learn about building viols, or for idle chit-chat. **Alexandra Saur**, (510) 558-6927; (510) 559-9563, in Albany.

**Bow Rehair** Alexandra Saur is now offering rehairing for both modern and early bows. Top quality hair and quick turnaround! 510-559-9563, [bowrehair@alexandrasaur.com](mailto:bowrehair@alexandrasaur.com).

### Lazar's Early Music

Moeck (recorders and early winds), Kueng, Mollenhauer, Yamaha, Aesthe, Dolmetsch Millenium Recorders, and others in the near future. Viols, used and new. Competitive prices, instruments sent on approval, personalized service and advice. **Bill Lazar**, (408) 734-4920.

Pictures are available on [www.bill-lazar.com](http://www.bill-lazar.com). Contact **Bill Lazar**, [jblazar@aol.com](mailto:jblazar@aol.com), (408) 734-4920 for more information.

### Ruby Instruments

The world's first production model of a 7-string solid body electric viola da gamba! Play traditional and crossover music on one instrument! To hear and play the Ruby, contact **Kirby Leong**, (510) 317-0834 or (510) 332-0834 (24-hour message); [gambaguy@msn.com](mailto:gambaguy@msn.com).

### Treble Viol Available to Rent

Treble viol by Michael Plant available for rent at reasonable price. Contact **Lee McRae**, (510) 848-5591, [LmcR@aol.com](mailto:LmcR@aol.com).

### Bass Viola da Gamba for Sale

Bass viol, Wolfgang Uebel, Germany, 1967. Good condition. 65cm string length. A division viol, nice and small. Comes with hard case and/or padded soft case. \$1,900. May be viewed and played in Berkeley. Contact Joan (707) 546-8505



## GAM A NEWS

*Gamba News* is published 10 times a year by the Pacifica chapter of the Viola da Gamba Society. It vacations in July and August.

### PACIFICA CHAPTER BOARD

President	Ellen Farwell <a href="mailto:Leonardfarwell@comcast.net">Leonardfarwell@comcast.net</a>
Vice President	Ricardo Hofer <a href="mailto:hofermr@sbcglobal.net">hofermr@sbcglobal.net</a>
Secretary	Joan Lounsbery <a href="mailto:joanl@sonic.net">joanl@sonic.net</a>
Treasurer	Penni (Pj) Savage <a href="mailto:pjsavage@earthlink.net">pjsavage@earthlink.net</a>

### BOARD MEMBERS AT LARGE

Rental Coordinator	John Mark <a href="mailto:mark_bach8@hotmail.com">mark_bach8@hotmail.com</a>
VdGSA chapter Representative	Lee McRae <a href="mailto:LmcR@aol.com">LmcR@aol.com</a>
Coaching Liaison	Alexandra Saur <a href="mailto:alexandra@alexandrasaur.com">alexandra@alexandrasaur.com</a>
Webmaster	Helen Tyrrell <a href="mailto:hesuome@pacbell.net">hesuome@pacbell.net</a>
Membership List Coordinator	Roy Whelden <a href="mailto:roywhelden@mac.com">roywhelden@mac.com</a>
Newsletter Editor	Julie Morrisett <a href="mailto:jmorrisett@gmail.com">jmorrisett@gmail.com</a>
Peter Ballinger	<a href="mailto:prbprdns@aol.com">prbprdns@aol.com</a>
John Dornenburg	<a href="mailto:jdllac@got.net">jdllac@got.net</a>
Robin Easterbrook	<a href="mailto:reasterbrook@mac.com">reasterbrook@mac.com</a>
Mary Elliott	<a href="mailto:marell3@sbcglobal.net">marell3@sbcglobal.net</a>
Julie Jeffrey	<a href="mailto:jjeffrey@library.berkeley.edu">jjeffrey@library.berkeley.edu</a>
Elisabeth Reed	<a href="mailto:ereed@soundbodies.net">ereed@soundbodies.net</a>
Lyle York	<a href="mailto:lileyork@earthlink.net">lileyork@earthlink.net</a>

### Contributions Welcome

Send concert listings and reviews, opinions, workshop experiences, CD reviews, drawings, or photos to Julie Morrisett, Editor, 1266 East 34th St., Oakland, CA, 94610, or [jmorrisett@gmail.com](mailto:jmorrisett@gmail.com); (510) 534-3690.



### Classified Ads

Short classified advertisements in Gamba News are free to VdGS-Pacifica members. For non-members, ads are \$5 per issue. Please mail your check made out to VdGS-Pacifica to Julie Morrisett, Editor, 1148 Norwood Ave. #1, Oakland, CA 94610.

### [www.pacificaviols.org](http://www.pacificaviols.org)

Our VdGS-Pacifica chapter website is maintained and regularly updated by Helen Tyrrell. It contains the Viol Player's Calendar, along with a list of local teachers, sources for music, supplies, inexpensive viols, repairs, and travel tips. The VdGSA (national) website is [www.vdgsa.org](http://www.vdgsa.org).

### Rent a Viol

Pacifica has trebles, tenors and basses to rent. Donations of viols and bows to our rental program are extremely welcome—we'll accept them in any condition. Rental fees range from \$15 to \$30 per month. In charge of rentals is John Mark, 10 Holyrood Manor, Oakland, CA 94611; (510) 531-1471; [mark\\_bach8@hotmail.com](mailto:mark_bach8@hotmail.com).

### Donating to VdGS-Pacifica

The Pacifica Chapter is an affiliate of the San Francisco Early Music Society (SFEMS), and along with other privileges this affiliation confers, we can receive tax-deductible donations. These include not only cash but viols, bows, musical scores, method books, tuners, stands and other viol paraphernalia. Especially since we now have a Youth Project working to teach young people the viol, please remember the chapter when you are cleaning out your music room.

Cash donations can be used for new rental instruments and bows, new music for the chapter playing library, the Pacifica Youth Project, or our scholarship fund.

To ensure that your donation will be tax-deductible, please make out the check to SFEMS with a note on the lower left corner: "for VdGS-Pacifica." Then send your donation check to Penni Savage, Treasurer, VdGS-Pacifica, 436 Hudson Street, Oakland, CA 94618. She will forward your check to SFEMS.

SFEMS will accept and record the donation, then transfer the funds to us. You will receive an acknowledgment letter from SFEMS for your tax records.

When you donate a viol or other materials, you will receive a letter citing the estimated value of the instrument or materials for your tax records.

## Mark Your Calendar

### Thursday, October 11

**Angela Hewitt, piano, and Daniel Müller-Schott, cello**, perform three viola da gamba sonatas by J.S. Bach. Presented by Cal Performances. Pre-concert talk 7-7:30 pm.

~ There are no viola da gambas on this program ~

8:00 pm, *First Congregational Church, Dana & Durant, Berkeley*. \$42. [www.calperfs.berkeley.edu](http://www.calperfs.berkeley.edu); (510) 642-9988

### Friday, October 26

**Magnificat** presents "Music from Hamburg, 1607." The group will be joined by **Sex Chordae Consort of Viols** (John Dornenburg, Julie Jeffrey, David Morris, Farley Pearce, violas da gamba) as well as **The Whole Noyse**. The program is a reconstruction of the 1607 re-dedication of St. Gertrude's Chapel in Hamburg, featuring composers such as Hieronymus Praetorius and Jakob Handl.

8:00 pm, *All Saints Episcopal Church, 555 Waverly St., Palo Alto*. \$28/\$20/\$12. [www.magnificatbaroque.org](http://www.magnificatbaroque.org)

### Saturday, October 27

**Magnificat** repeats program of October 26.

8:00 pm, *St. Mark's Episcopal Church, 2300 Bancroft Way, Berkeley*. \$28/\$20/\$12. [www.magnificatbaroque.org](http://www.magnificatbaroque.org)

### Saturday, October 27

**Mid-Peninsula Recorder Orchestra Workshop: A Comparison of Renaissance and Baroque—What sets them apart?** Conducted by Frances Blaker. Learn what musical features distinguish these two periods through playing. Space limited; registration encouraged. Recorders, viols, voices, and renaissance flutes are all welcome.

9:30 am - 4:30 pm, *Unitarian Universalist Church of Palo Alto, 505 East Charleston Road, Palo Alto*. SFEMS members \$35. Bring lunch and a music stand. (415) 664-9050, [www.sfems.org/npro](http://www.sfems.org/npro)

### Sunday, October 28

**Magnificat** repeats program of October 26.

4:00 pm, *St. Mark's Lutheran Church, 1111 O'Farrell St., San Francisco*. \$28/\$20/\$12. [www.magnificatbaroque.org](http://www.magnificatbaroque.org)

### Friday, November 2

**Astrid Andersson, recorder, Cynthia Freivogel, baroque violin, Elisabeth Reed, baroque cello and viola da gamba, and Corey Jameson, harpsichord** present works by Selma y Salaverde and other 17th century masters.

7:30 pm, *MusicSources, 1000 The Alameda at Marin, Berkeley*. \$15 at the door. (510) 528-1685

### Friday, November 2

**East Bay Chapter, ARS**, monthly meeting. Judy Linsenberg, guest conductor. Viols welcome!

7:30 pm - 10:00 pm, *Zion Lutheran Church, 5201 Park Blvd., Oakland*. (510) 483-8675 or (415) 472-6367

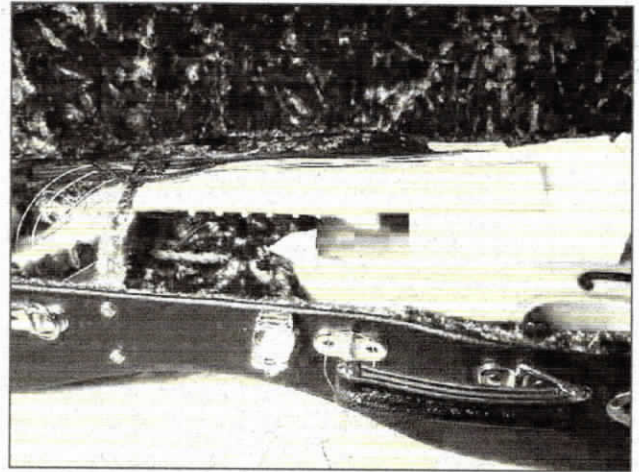
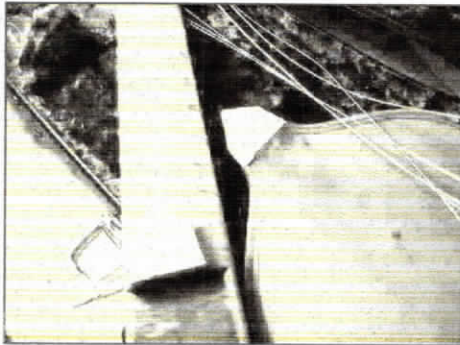
# Shipping Nightmare

Nelda Smith

May this horror story help you  
when you next ship a viol

I asked for a treble viol on approval, decided not to keep it and shipped it back. I thought it was well packed but the pictures show how the viol was received by its maker.

When I packed the viol for returning, the bow knot in the cord anchoring the the neck slipped very slightly after tying. However, the "play" was insignificant and I did not consider the looseness enough to cause trouble. But as there was no apparent damage to the box when the luthier received the package a claim against the shipper was pointless and I became responsible for the wreckage. After considering the cost to compensate the luthier for devaluing the instrument and adding a sum for repair costs, I realized that I would be best off buying the damaged viol.



The expert opinion I received is that the MTM cases have a dangerous spot—the cradle that the neck sits in. (Other manufacturers have abandoned this feature.) If there is any play at that location the cradle acts like an axe and shears off the neck.

But the ending is happy. The repair was skillfully done and the instrument a joy to have.

May you fare better on your next shipping!



## Membership Updates

### New Members

**Celeste Marquiss**  
4936 Virginia Way  
Sacramento, CA 95822  
(916) 715-7898  
camarquiss@ucdavis.edu

**Amber McCurdy**  
829 Castro St., Apt. A  
San Francisco, CA 94114  
(415) 828-8108  
amber@earthlink.net

### Updates

**Joan Lounsbury**  
36 Oak Forest Place  
Santa Rosa, CA 95409  
(707) 546-8505  
joanl@sonic.net

**Kristin Righetti**  
4180 Righetti Road  
San Luis Obispo, CA 94301  
(805) 550-9737  
krighetti@calpoly.edu

### Renewals

**Peter Ballinger & Leslie Gold,**  
**Elizabeth Brownell, Robin East-**  
**erbrook, Ellen Farwell, Kirby**  
**Leong, Denise E. Mauldin, John**  
**Mark, Julie Morrisett, Sheila**  
**Newbery, Elisabeth Reed, Nancy**  
**Rifkin, Pj Savage, Nelda Smith,**  
**Walter Unterberg**



## Zice Viols on DVD



Zice Viols, June 9, 2007

The Zice Viols recorded their 'Greatest Hits' in June, with John Mark videotaping, and Elisabeth Reed coaching. As Imogen is now at the Scottish Fiddling Academy, this was, perhaps, the last chance to record the group together. A reunion tour has not been ruled out, however.

## What the Coach Said

Elisabeth Reed, September's Play Day coach, emphasized practicing beyond what is usual, with the idea that doing so will make the usual seem easy. In this spirit, she took us through several exercises for the left hand alone. "Walking" across the fretboard (top string to bottom and back) with various combinations of two fingers emphasized the point. Unusual combinations, such as the first and fourth fingers on adjoining frets, or the third and fourth fingers on non-adjoining frets get the hand to contract and stretch beyond the usual playing requirements. Doing so also helps the hand to relax.

## This Month



Saturday, October 27  
Play day with  
Amy Brodo



### Join VdGS-Pacifica or renew for 2007-2008

First and last name \_\_\_\_\_  
Mailing address \_\_\_\_\_  
City, State and Zip \_\_\_\_\_  
email address \_\_\_\_\_  
Phone number, including area code \_\_\_\_\_

Make out check  
to VdGS-Pacifica.  
Mail it with this form to:

Penni (Pj) Savage, Treasurer  
VdGS-Pacifica  
436 Hudson Street  
Oakland, CA 94618

\_\_\_\_\_ Playing Member (\$35): You can attend monthly consort meetings free; you get a free subscription to Gamba News, and you get a discount on consort-coaching sessions.

\_\_\_\_\_ Two-person membership (\$45): Two playing members in the same household. You share all the rights and privileges of a Playing Member.

\_\_\_\_\_ Newsletter-Only Membership (\$10)

\_\_\_\_\_ Donation to VdGS-Pacifica will help us buy sheet music and rental instruments and fatten our scholarship fund. May we acknowledge your donation in the newsletter?

Yes ☐ No ☐

\_\_\_\_\_ TOTAL ENCLOSED